



## ON1022— 195 Savannah Oaks Drive

Before



View from Savannah Oaks Drive looking South towards proposed Signum tower.

After



Proposed lattice tripole tower shown at approximately 50.0 metres in height. The photo simulation is based on information provided by Signum prior to construction. The photograph location is approximately 217 metres from tower location.

**PHOTOGRAPHIC SIMULATION  
BEFORE AND AFTER**





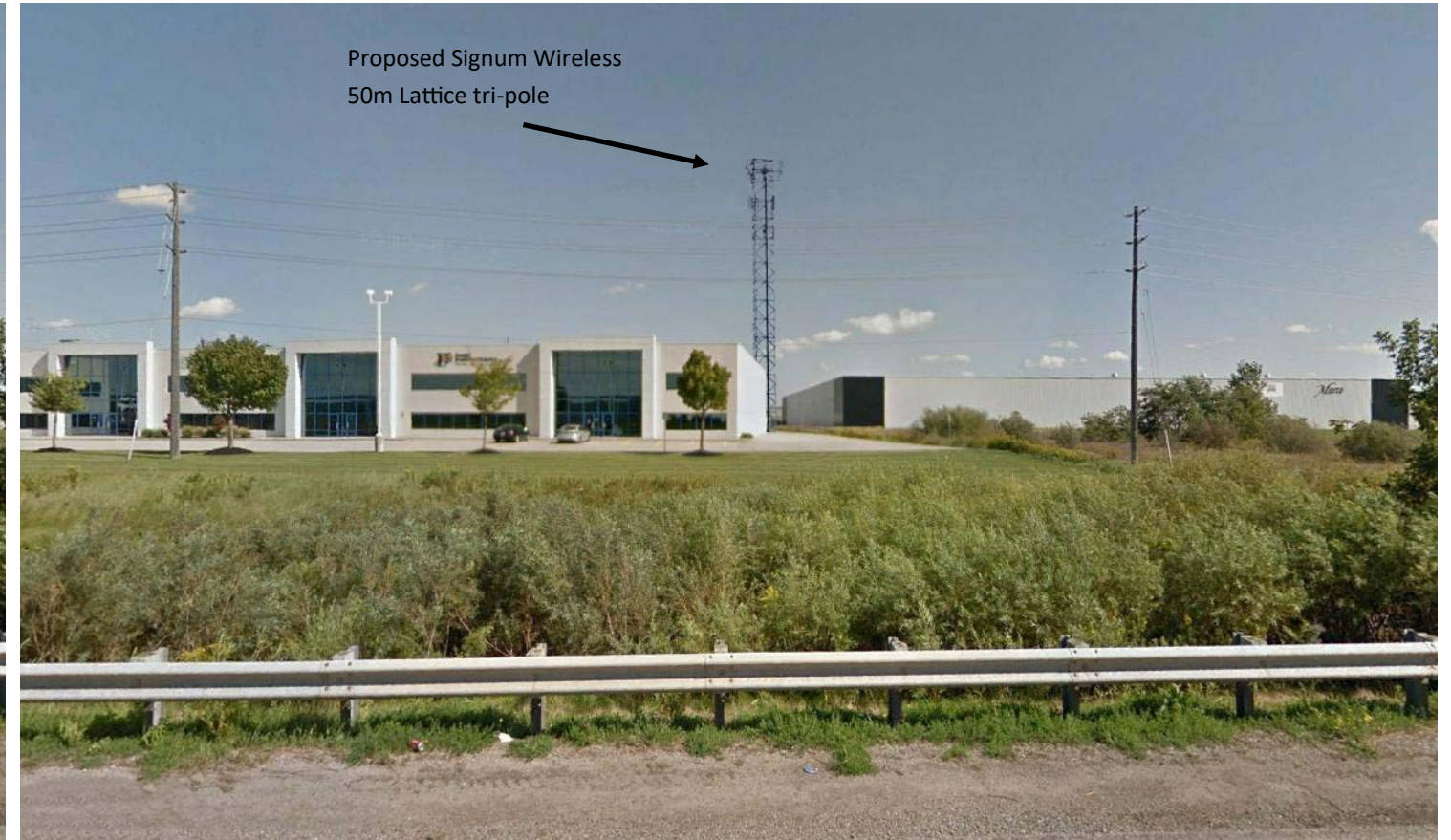
## ON1022— 195 Savannah Oaks Drive

**Before**



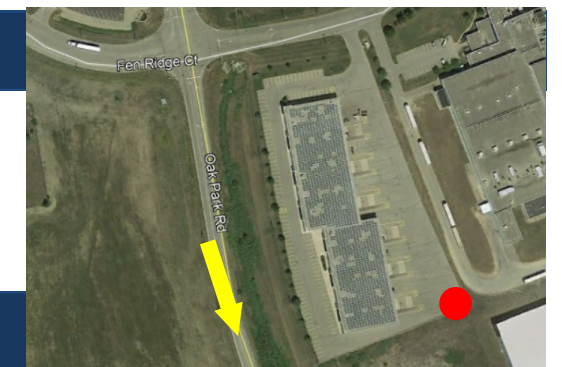
View from Savannah Oaks Drive looking South towards proposed Signum tower.

**After**



Proposed lattice tripole tower shown at approximately 50.0 metres in height. The photo simulation is based on information provided by Signum prior to construction. The photograph location is approximately 144 metres from tower location.

**PHOTOGRAPHIC SIMULATION  
BEFORE AND AFTER**





## ON1022— 195 Savannah Oaks Drive

**Before**



View from Savannah Oaks Drive looking South towards proposed Signum tower.

**After**



Proposed lattice tripole tower shown at approximately 50.0 metres in height. The photo simulation is based on information provided by Signum prior to construction. The photograph location is approximately 331 metres from tower location.

**PHOTOGRAPHIC SIMULATION  
BEFORE AND AFTER**

