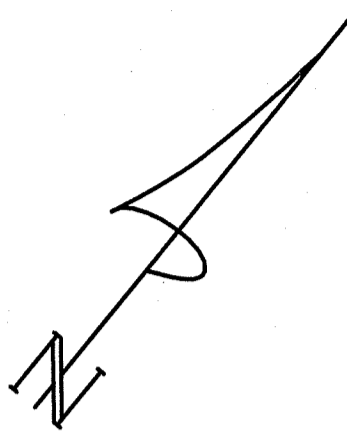


DISTANCES AND CO-ORDINATES SHOWN ON THIS PLAN ARE IN METRES AND CAN BE CONVERTED TO FEET BY DIVIDING BY 0.3048.

SCHEDULE				
PART	LOT	PLAN	PIN	AREA IN SQUARE METRES
1				694
2				22
3	76	760	32275-0104	60
4				434
5				1.8
6	PART OF 15			41
7	PART OF 15 AND 16	1557	32275-0013	863

PARTS 1, 2, 3, 4 AND 5 TOGETHER COMPRISE ALL OF PIN 32275-0104. PARTS 6 AND 7 TOGETHER, COMPRISE ALL OF PIN 32275-0013. PARTS 2, 3 AND 5 ARE SUBJECT TO AN EASEMENT DESCRIBED IN A6060.



PLAN OF SURVEY OF
 LOT 76, REGISTERED PLAN 760
 AND
 LOT 15 AND PART OF LOT 16
 REGISTERED PLAN 1557
 SCALE 1:300



THE INTENDED PLOT SIZE OF THIS PLAN IS 609mm IN WIDTH BY 457mm IN HEIGHT WHEN PLOTTED AT A SCALE OF 1:300
 MacAULAY, WHITE & MUIR LTD.

NOTE:
 BEARINGS ARE GRID, DERIVED FROM OBSERVED REFERENCE POINTS A AND B BY REAL TIME NETWORK OBSERVATION, UTM ZONE 17, NAD83 (CSRS) (2010). DISTANCES ARE GROUND AND CAN BE CONVERTED TO GRID BY MULTIPLYING BY THE COMBINED SCALE FACTOR OF 0.999813.
 ALL DIMENSIONS ARE MEASURED UNLESS QUALIFIED.
 ALL FENCES ARE "ON LINE" UNLESS TIES TO THE PROPERTY LINE ARE SHOWN. ALL PINS ARE LT UNLESS NOTED (R).
 FOR BEARING COMPARISONS, A ROTATION OF 1'39" COUNTER-CLOCKWISE WAS APPLIED TO BEARINGS ON REGISTERED PLAN 760.
 FOR BEARING COMPARISONS, A ROTATION OF 1'07"23" COUNTER-CLOCKWISE WAS APPLIED TO BEARINGS ON REGISTERED PLAN 1557 AND PLAN 2R-2104.
 FOR BEARING COMPARISONS, A ROTATION OF 0'37"40" COUNTER-CLOCKWISE WAS APPLIED TO BEARINGS ON REGISTERED PLAN 1632.

OBSERVED REFERENCE POINTS (ORP): UTM ZONE 17, NAD83 (CSRS) (2010) CO-ORDINATES TO URBAN ACCURACY PER SEC. 14(2) OF O. REG 216/10.

POINT ID	NORTHING	EASTING
A	4781667.16	559265.41
B	4781603.05	559313.65

CO-ORDINATES CANNOT, IN THEMSELVES, BE USED TO RE-ESTABLISH CORNERS OR BOUNDARIES SHOWN ON THIS PLAN.

THE RESULTANT TIE BETWEEN ORP (A) AND ORP (B) IS N36°57'40"W 80.23.

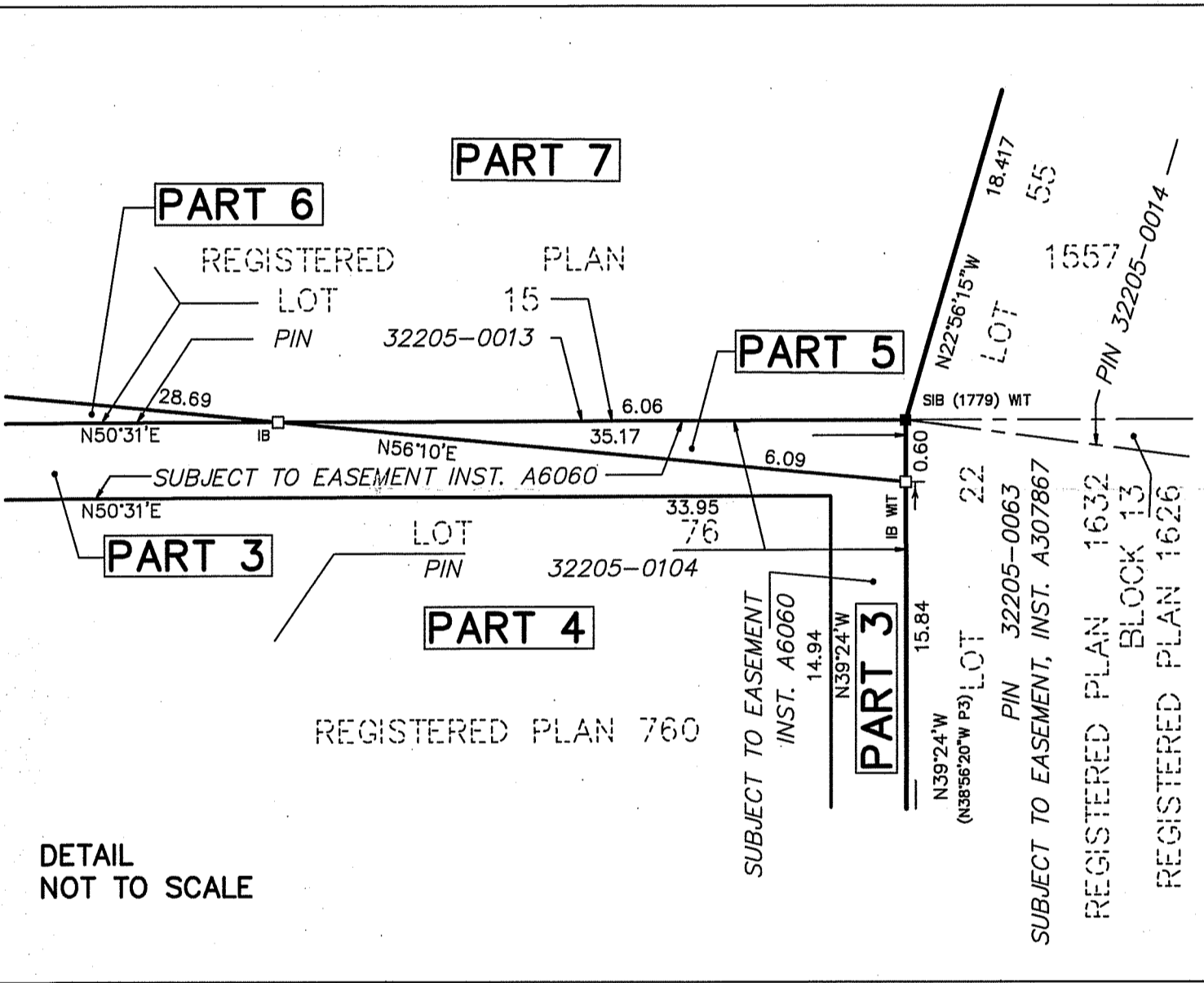
SURVEYOR'S CERTIFICATE

I CERTIFY THAT:
 1. THIS SURVEY AND PLAN ARE CORRECT AND IN ACCORDANCE WITH THE SURVEYS ACT, THE SURVEYORS ACT AND THE LAND TITLES ACT AND THE REGULATIONS MADE UNDER THEM.
 2. THE SURVEY WAS COMPLETED ON THE 8th DAY OF AUGUST, 2023.

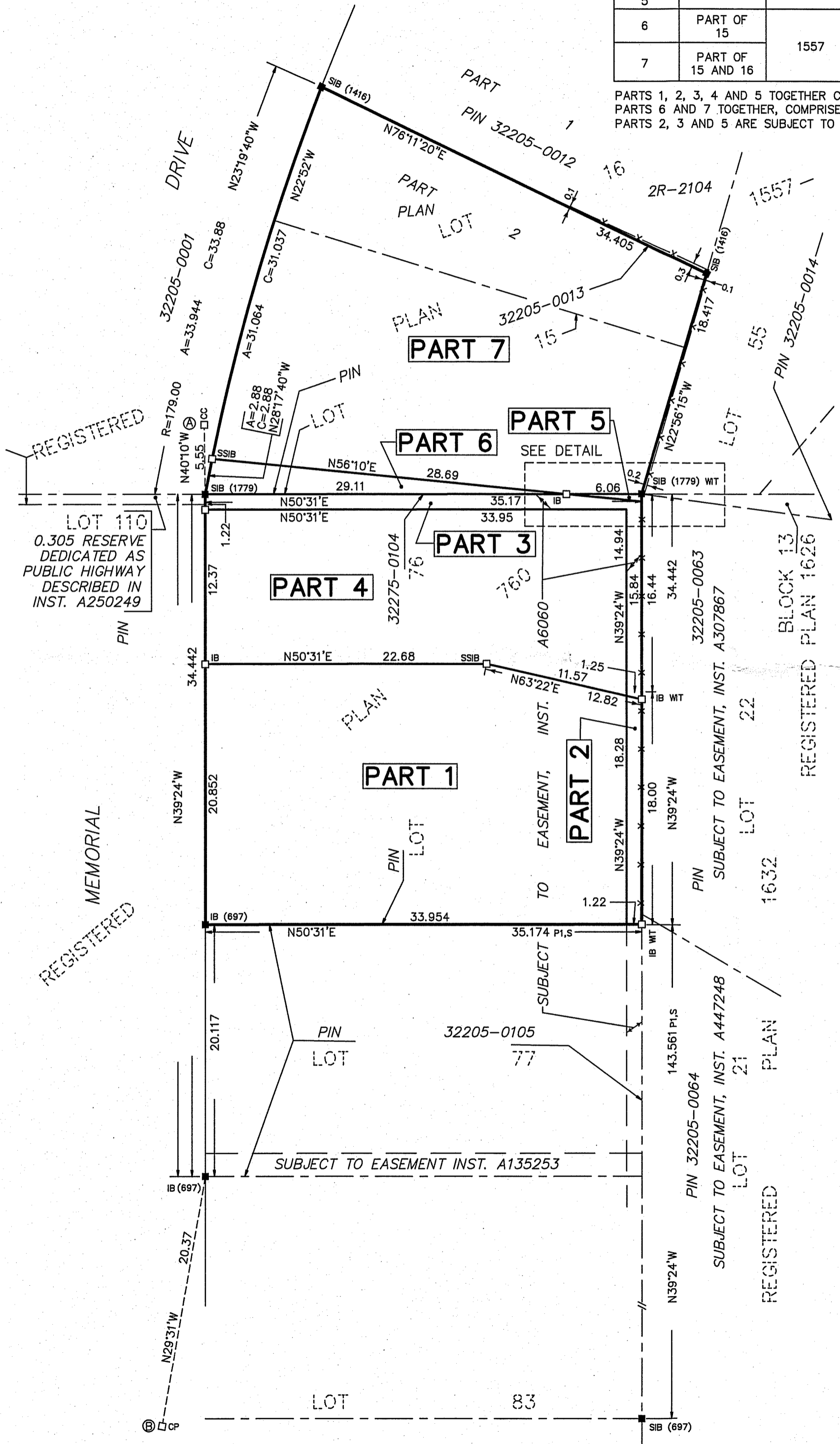
JUNE 25, 2024
 JOHN W. MUIR
 ONTARIO LAND SURVEYOR

THIS PLAN OF SURVEY RELATES TO AOLS PLAN SUBMISSION FORM NUMBER V-

<p>MacAulay, White & Muir Ltd. ONTARIO LAND SURVEYORS - CANADA LANDS SURVEYORS A Wholly Owned Subsidiary of J.D. Barnes Limited 440 HARDY ROAD, UNIT 2, BRANTFORD, ON N3T 5L8 T: (519) 752-0040 www.jdbarnes.com</p>	DRAWN:	LD
	CHECKED:	JM
	Ref. No.	21-50-341-00



- LEGEND**
- SIB - STANDARD IRON BAR
 - SSIB - SHORT STANDARD IRON BAR
 - IB - IRON BAR
 - CC - CUT CROSS
 - CP - CONCRETE PIN
 - - PLANTED
 - - FOUND
 - - ROUND
 - 697 - G.B. MACAULAY O.L.S.
 - 1779 - MacAULAY, WHITE & MUIR LTD.
 - WT - WITNESS
 - S - SET
 - P1 - REGISTERED PLAN 760
 - P2 - REGISTERED PLAN 1557
 - P3 - REGISTERED PLAN 1632
 - P4 - PLAN 2R-2104



REGISTERED MEMORIAL

LOT 110
 0.305 RESERVE DEDICATED AS PUBLIC HIGHWAY DESCRIBED IN INST. A250249

IB (697)

SIB (697)