

PLANT MATERIALS LEGEND

TREES:						
SYMBOL	ABBR.	BOTANICAL NAME	COMMON NAME	QTY.	SIZE/ROOT	DETAIL
	AF	<i>Acer x freemanii 'Jeffersred'</i>	Autumn Blaze Maple	2	70mm CAL. W.B.	9 / L7
	AG	<i>Amelanchier x grandiflora 'Autumn Brilliance'</i>	Autumn Brilliance Serviceberry (Tree Form)	1	60mm CAL. W.B.	9 / L7
	CJ	<i>Cercidiphyllum japonicum</i>	Katsura Tree (Tree Form)	1	70mm CAL. W.B.	9 / L7
	QR	<i>Quercus rubra</i>	Red Oak	2	70mm CAL. W.B.	9 / L7
	LT	<i>Liriodendron tulipifera</i>	Tulip Tree	1	70mm CAL. W.B.	9 / L7

1 QUANTITY OF TREES REQUIRED
AF TREE SPECIES (ABBR.)

PLANTING PLAN NOTES:

- All individual plant materials proposed for use must be reviewed by the Consultant in advance of delivery through nursery visits or acceptable photographic submissions.
- Any proposed substitutions, including changes in plant material sizing, must be accepted prior to delivery of any plant materials to the site.
- Coordinate installation of all landscape works to ensure that access for successive parts of the work is not impeded, and that previously installed parts of the work are not damaged.
- Schedule delivery and installation of plant material only (i) after all related works have been reviewed and accepted, (ii) after mulch has been delivered to the site and is ready to be installed.
- Do not deliver plant materials to the site in quantities exceeding the Contractor's capacity for a single day's installation.
- Do not store plant material on site overnight.
- All plant material will be inspected by the Consultant upon delivery to the site and prior to planting; unacceptable materials must be removed from the site immediately.
- The Contractor shall maintain all plant materials from the time of delivery to the site until final acceptance by the Owner.

GENERAL NOTES:

- Construction crews shall immediately notify the landscape architect of any discrepancies between the drawings and the actual conditions encountered on-site.
- Construction crews shall contact the landscape architect to review any changes in design, proposed substitutions in materials, or deviations from construction methods as shown or described on the drawings or in the specifications.
- Construction crews shall exercise extreme care when operating equipment in the vicinity of existing trees. Do not drive equipment or store any materials over root systems or anywhere within the dripline of existing trees.

CONSTRUCTION NOTES:

- This plan provides a summary of the work of this project, in context. For all works, refer to the appropriate plans, details and specifications. Construction crews are responsible for coordinating all works.
- This plan illustrates the design intent for this project. If previously constructed or surrounding conditions are found to vary from those illustrated here and may require adjustment to the design, then construction crews shall contact the Consultant for review.
- The contractor shall protect from damage all trees or facilities within the park or on adjacent properties, not indicated to be removed. Any damage shall be immediately repaired to the City's satisfaction.
- The Contractor shall keep all construction-related access and activities within the designated areas indicated on the drawings or as agreed by the Owner's representative.

LEGEND

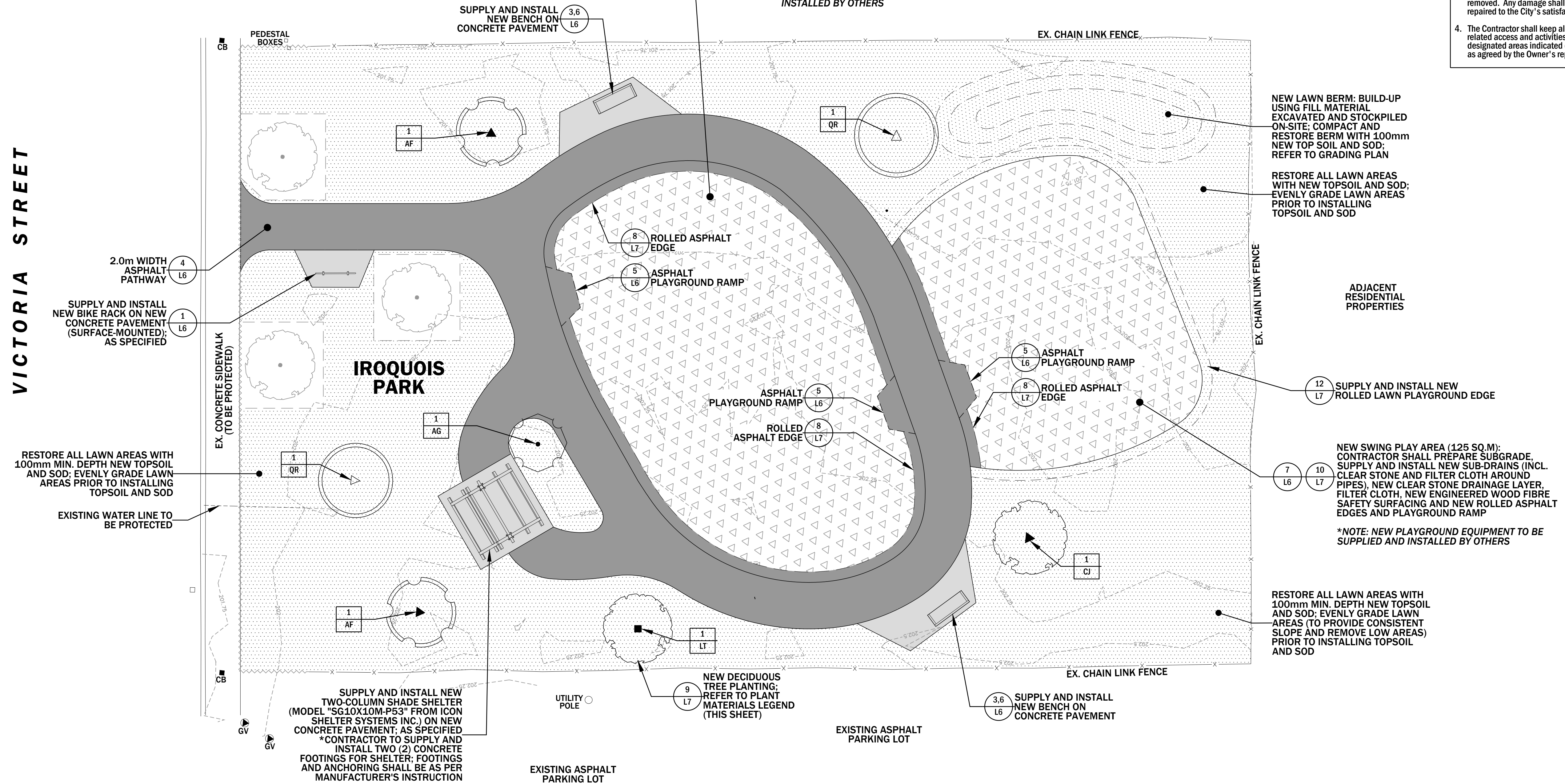
- EXISTING TREES TO BE PROTECTED
- TEMPORARY TREE PROTECTIVE FENCING; SNOW FENCE AS PER DETAIL
- TEMPORARY SITE FENCING; 8' MODU-LOC CONSTRUCTION FENCE, TYP.
- NEW MEDIUM-DUTY ASPHALT PAVEMENT; AS SPECIFIED
- NEW CONCRETE PAVEMENT; AS SPECIFIED
- ENGINEERED WOOD FIBRE SAFETY SURFACE
- NEW TOPSOIL AND SOD
- PARK BENCH; AS SPECIFIED (SUPPLIED AND INSTALLED BY CONTRACTOR)
- BIKE RACK; AS SPECIFIED (SUPPLIED AND INSTALLED BY CONTRACTOR)
- ROLLED ASPHALT EDGE
- NEW TREES; SYMBOLS VARY

VICTORIA STREET

ADJACENT RESIDENTIAL PROPERTIES

COMBINED NEW JUNIOR/SENIOR PLAY AREA (185 SQ.M): CONTRACTOR SHALL PREPARE SUBGRADE, SUPPLY AND INSTALL NEW SUB-DRAINS (INCL. CLEAR STONE AND FILTER CLOTH AROUND PIPES), NEW CLEAR STONE DRAINAGE LAYER, FILTER CLOTH, NEW ENGINEERED WOOD FIBRE SAFETY SURFACING AND NEW ROLLED ASPHALT EDGES AND PLAYGROUND RAMPS

*NOTE: NEW PLAYGROUND EQUIPMENT TO BE SUPPLIED AND INSTALLED BY OTHERS

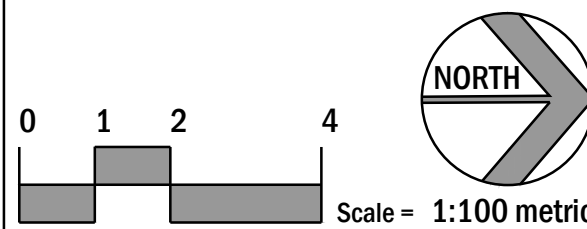


1 13
DETAIL NUMBER(S)
(ITEM DESCRIPTION)
DRAWING SHEET NUMBER
WHERE DETAIL IS FOUND

NO	YYYY-MM-DD	REVISION	DN	CH
3	2024-05-23	FOR CONSTRUCTION	LP	-
2	2024-01-12	FOR QUOTATION	LP	-
1	2023-04-21	FOR PRELIMINARY REVIEW	KP	LP



**IROQUOIS PARK:
PARK LANDSCAPE IMPROVEMENTS**
132 Victoria Street, Brantford, ON.



VFA Project: 2301
Sheet: 3 of 7
Drawing: **L3**

LANDSCAPE PLAN