

LANDSCAPE NOTES:

1. All work to be carried out in accordance with by-laws and codes having jurisdiction over site location.
2. Complete all work to the satisfaction of the Landscape Architect.
3. Report any changes, discrepancies or substitutions to the Landscape Architect for review. Obtain approval from the Landscape Architect before proceeding.
4. It is the contractor's responsibility to determine existing service locations.
5. Exact locations of plant material will be determined by placement of site services such as hydro vaults, meters, utilities roof rain water leaders, driveways, light standards, etc.
6. All plant material locations to be staked or marked out and approved by Landscape Architect prior to installation.
7. Supply all plant material in accordance with the Canadian Standards for Nursery Stock (8th ed.).
8. Install plant material according to details shown.
9. Supply and place mulch in accordance with Canadian Landscape Standard (Section 10, Mulching). Disturbed soil areas around trees and shrubs are to be covered with shredded conifer bark mulch such

GENERAL NOTES:

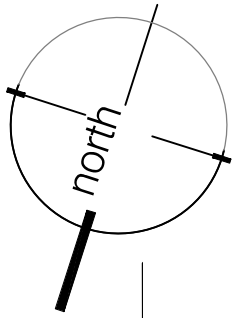
1. All work to be carried out in accordance with by-laws and codes having jurisdiction over site location.
2. Complete all work to the satisfaction of the Landscape Architect and/or City of Brantford.
3. Report any changes, discrepancies or substitutions to the Landscape Architect for review. Obtain approval from the Landscape Architect before proceeding.
4. Not for construction unless stamped, signed and dated by Landscape Architect.
5. Contractor to utilize layout dimensions where provided.
6. All dimensions and elevations shall be checked in the field by the contractor prior to any construction and shall report any discrepancies to the consultant immediately.
7. Contractor responsible to clear area of all utility locates including private water and hydro if applicable.
8. The locations of all underground and above ground utilities and structures is not guaranteed. Before starting work the contractor shall inform themselves of the exact location of all such utilities and structures and shall assume all liability for damage of them.
9. All backfill for sewers, water mains and utilities must be mechanically compacted to 98% standard proctor density, unless otherwise recommended by geotechnical engineer.

as Cedar
Gro-Bark
approved
Contractor
10. Provide
11. accomm
12. All suppo
13. accepta
Standards
14. Supply a
Medium)
Standards
15. Sod/uniel
Standards
Medium)
seeded
protectio

or Bark Mulch by All Treat Farms or 'Classic Cedar Mulch' by or approved equivalent. Alternative mulches must be approved by the Landscape Architect.
or to utilize layout dimensions where provided
planting bed area as noted on the drawing or to
update mature size of plant material.
art systems must be removed by the contractor at time of final
nce. No extras will be paid to complete this work
nd place topsoil in accordance with Canadian Landscape
(Section 4, Grading & Drainage and Section 6, Growing
to a minimum depth of 150mm unless otherwise specified.
nd place sod in accordance with Canadian Landscape
(Section 7, Lawns & Grass and Section 8, Turfgrass
ss otherwise specified.
nd place seed in accordance with Canadian Landscape
(Section 4, Grading & Drainage and Section 6, Growing
unless otherwise specified. All 5:1 or greater slopes to be
with taffier. Contractor to provide necessary erosion control
n as required to ensure soil stabilization and proper seed

16. germination.
17. All dimensions in meters unless otherwise noted.
If discrepancies arise between plant material count shown on drawing and plant list, the drawing shall be considered correct.
18. Contractor to provide minimum two (2) year warranty (including trees on municipal property) from date accepted on all work unless otherwise specified.
19. Not for construction unless stamped, signed and dated by Landscape Architect.
20. Drawings not to be reproduced without written consent from Landscape Architect.
21. Approval of landscape plan to be obtained from municipality.
22. All plant material to be planted a minimum of 1.0m from any swales or ditches.

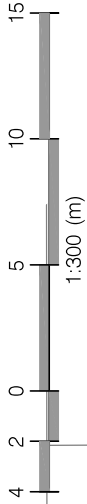
JAMES AVENUE



220.14 (2-2196-2)
220.20 (2-2196-2)
220.19 (2-2196-2)
220.52 (2-2196-2)
220.65 (2-2196-2)

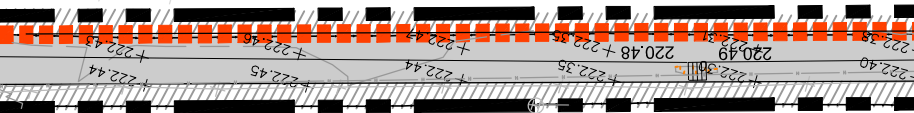


FENCE 0.71N



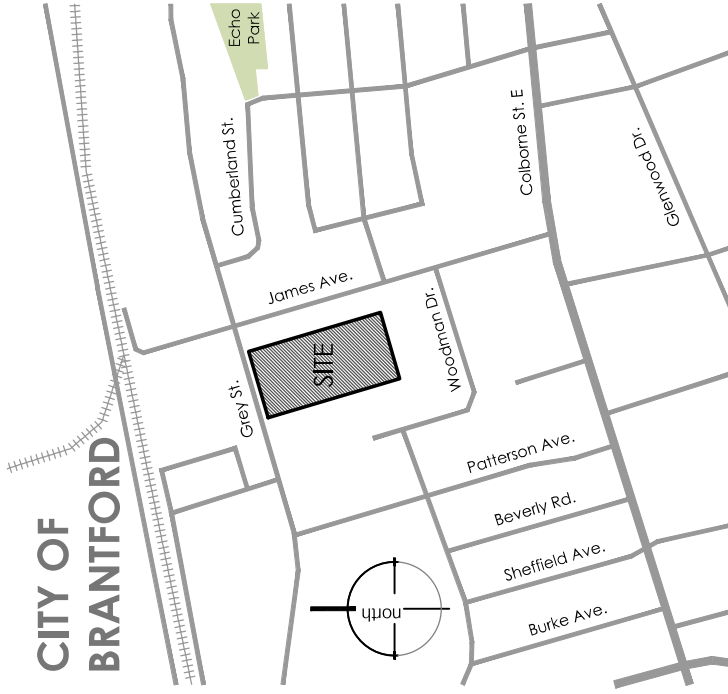
CHAIN LINK FENCE GENERALLY ON LINE

FENCE GENERALLY 0.90 NORTH



KEY MAP - N.T.S.

CITY OF BRANTFORD



LEGEND

--- property line



existing tree to remain



proposed deciduous tree



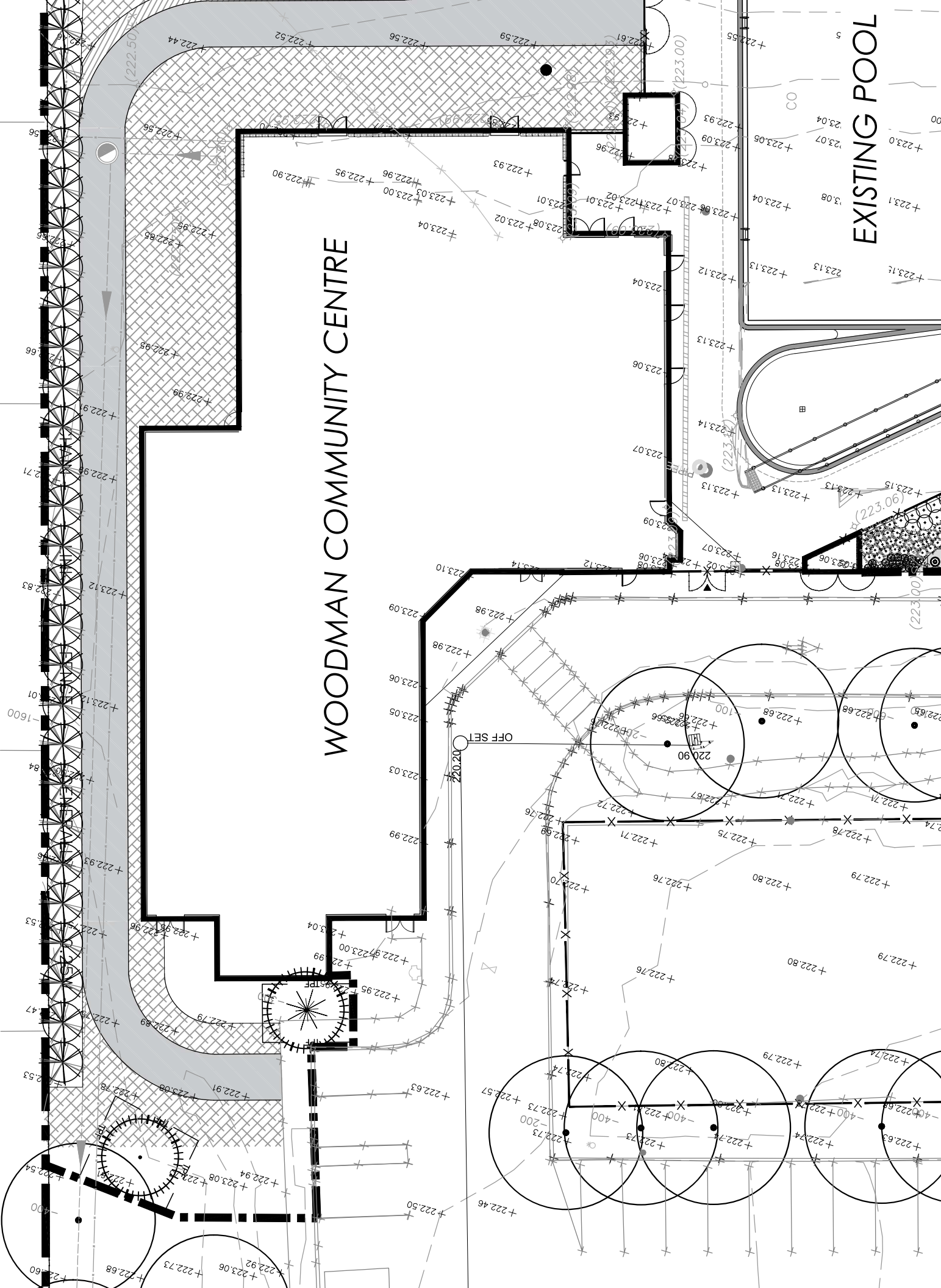
proposed perennials



proposed shrubs

WOODMAN COMMUNITY CENTRE

EXISTING POOL



FENCE 0.42N, 0.35W

FENCE

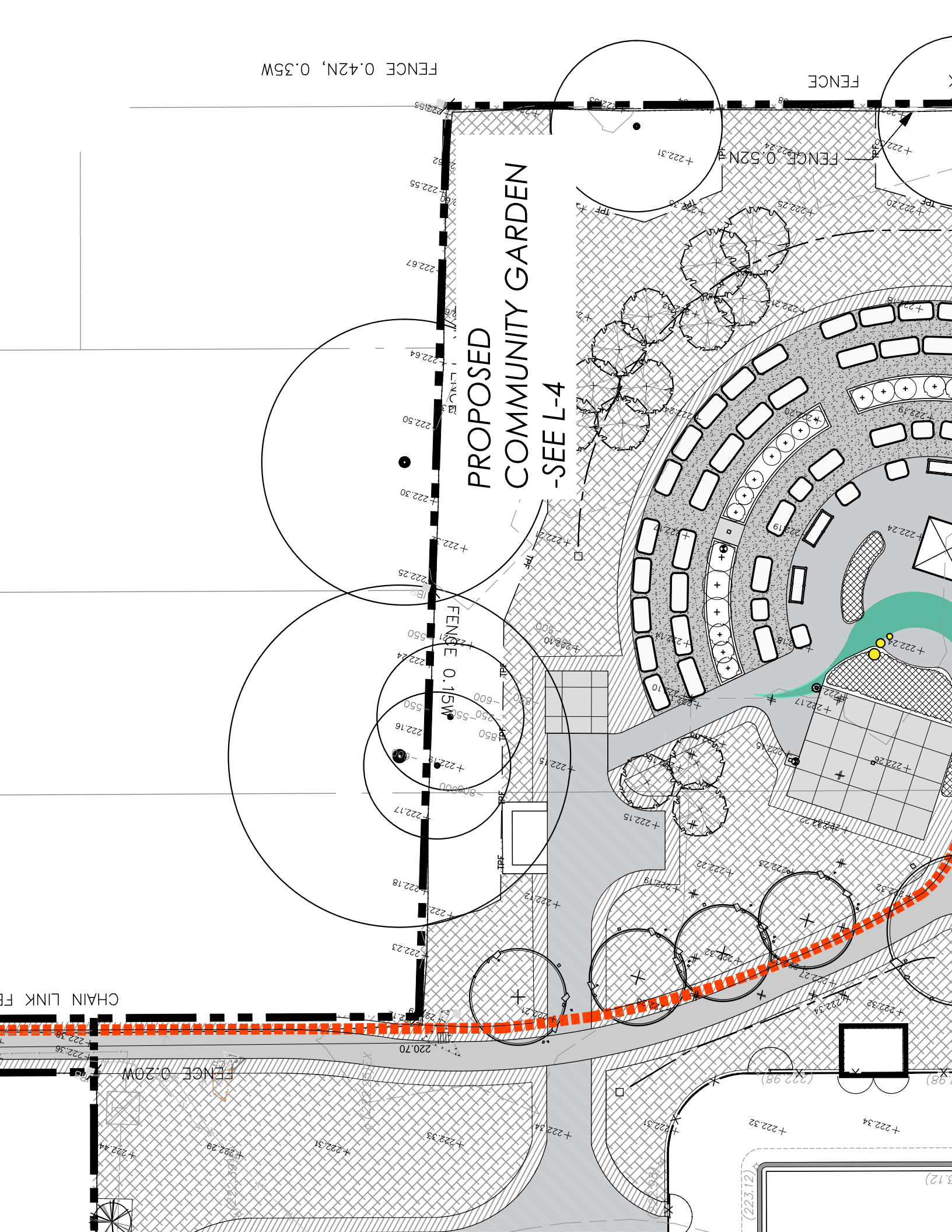
FENCE 0.52N

PROPOSED COMMUNITY GARDEN -SEE L-4

FENCE 0.15SW

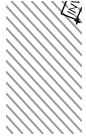
FENCE 0.20W

CHAIN LINK FENCE

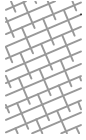


+223.15

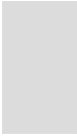
existing elevation



min. 150mm topsoil, fine grade & sod



min. 150mm topsoil, fine grade & seed



C.I.P. concrete
-see detail D10/L-11



asphalt paving
-see detail D8/L-11



limestone screening
-see detail D11/L-11

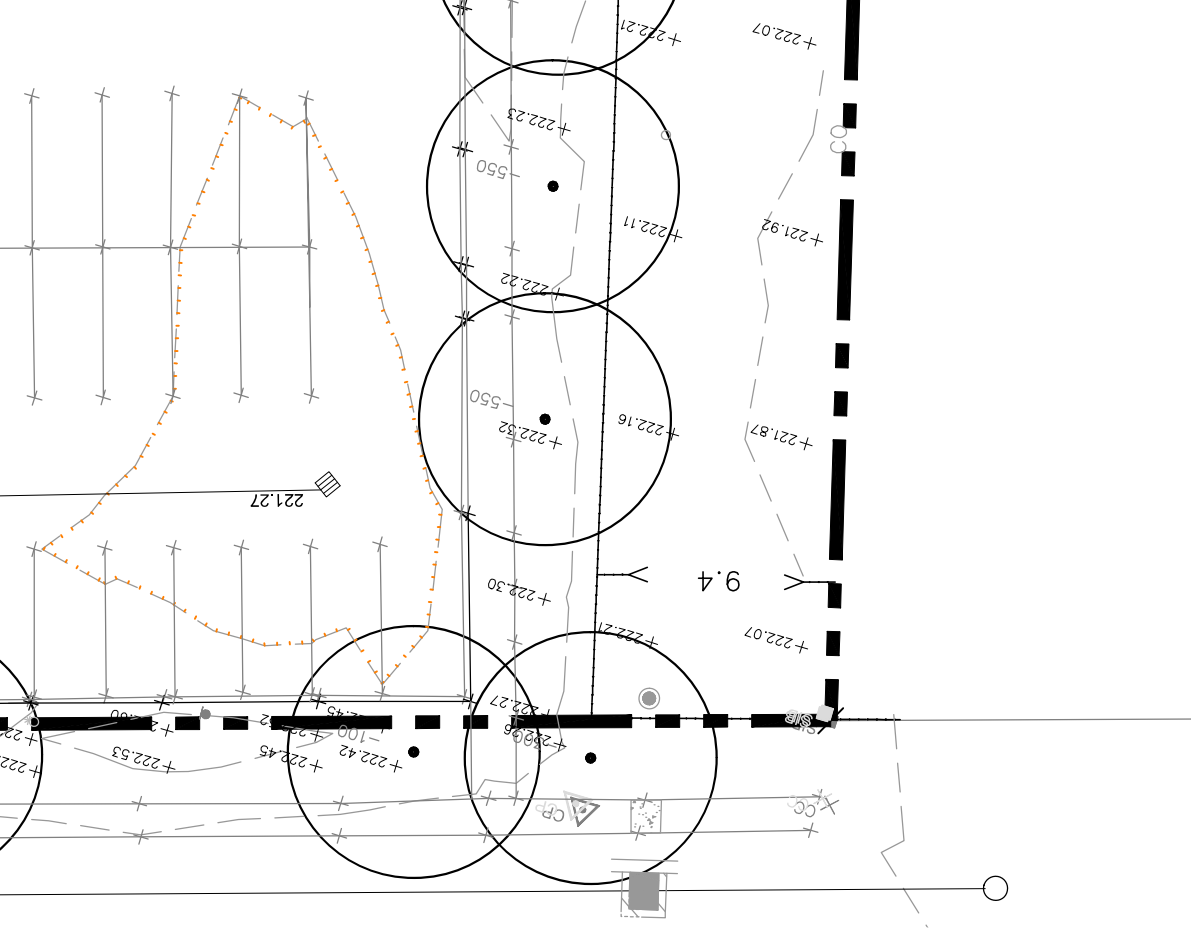
ISSUED FOR TENDER

REVISIONS/ SUBMISSIONS

#	DATE	DESCRIPTION
1	2023-08-03	Issued for 75% WD review
2	2023-08-18	Issued for 100% WD
3	2023-09-19	Issued for Tender

STAMP





PROPOSED PARK -SEE L-3







CLIENT

The Corporation of the
City of Brantford

MUNICIPALITY

City of Brantford

PROJECT

Woodman Youth Park
491 Grey Street

MUNICIPAL FILE NUMBER

SHEET

Overall Landscape
Plan

L-2

adesso design inc.
landscape architecture



69 John Street South, Suite 250
Hamilton, ON L8N 2B9
t. 905.526.8876
www.adessodesigninc.ca