



This is a reduced report template to be used for Staff to present a report to a Task Force or Advisory Committee ONLY.

Alternative formats and communication supports available upon request. Please contact accessibility@brantford.ca or 519-759-4150 for assistance.

Date September 12, 2024 **Report No.** 2024-554

To Chair and Members
Accessibility Advisory Committee

From Jennifer Elliott, LET, C.E.T., Dipl.M.M
Director, Engineering Services

1.0 Type of Report

Consent Item
Item For Consideration

2.0 Topic Wayne Gretzky Sports Centre Adult Change Table Project Update

3.0 Recommendation

A. THAT Staff Report 2024-554 – Wayne Gretzky Sports Centre Adult Change Table Project Update BE RECEIVED.

4.0 Background

In the winter of 2020 Council approved the latest [Brantford Accessibility Plan](https://www.brantford.ca/en/your-government/resources/Documents/Accessibility/2020-2025-Brantford-Accessibility-Plan.pdf)¹ (2020-2025) which outlines the City’s strategy to prevent and remove barriers and meet its requirements under the Accessibility for Ontarians with Disabilities Act (AODA).

Within this plan Brantford City Council has made the commitment to achieve an accessible community for all its citizens, visitors and staff by eliminating barriers

¹ <https://www.brantford.ca/en/your-government/resources/Documents/Accessibility/2020-2025-Brantford-Accessibility-Plan.pdf>

in a manner that respects the dignity, independence and autonomy of the individual while ensuring full integration and equal opportunities, regardless of ability.

In Appendix C of the Brantford Accessibility Plan, it was identified in Table 2 that an Adult Change Table was to be installed at Wayne Gretzky Sports Center (WGSC) as part of the Funded Accessibility Modification Projects for Future Consideration.

5.0 Analysis

The project was managed by City of Brantford Engineering Services - Facilities Capital Development staff who delivered this project along with services from the prime consultant, G. Douglas Vallee Ltd., and the contractor, Brayr Construction Ltd. who have proven expertise and experience in construction projects. The project included the supply and installation of an adult change table in the existing, modified accessible change room inside the 25m pool Family Change Room.

Figure 1 below shows the initial floor plan of the 25m pool Family Change Room and Figure 2 below shows a zoomed-in view of the new modified floor plan identifying the location for the adult change table, grab bars and turning radius.

Figure 1 - Initial Floor Plan of the 25m Pool Family Change Room

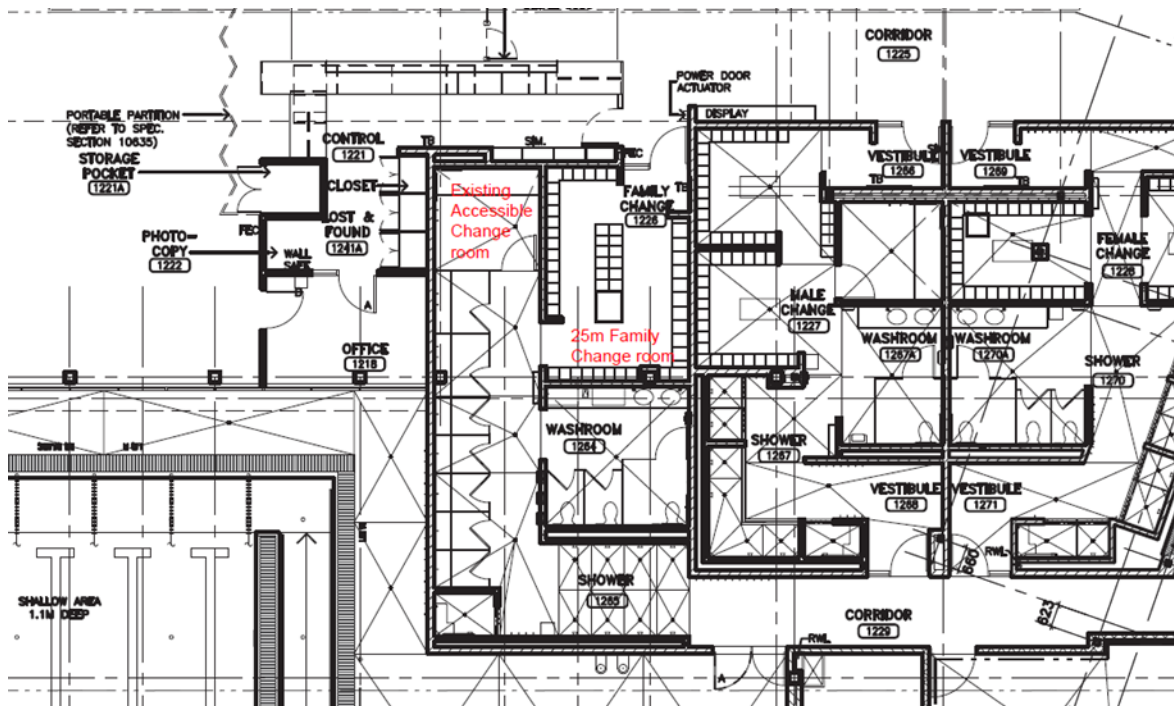
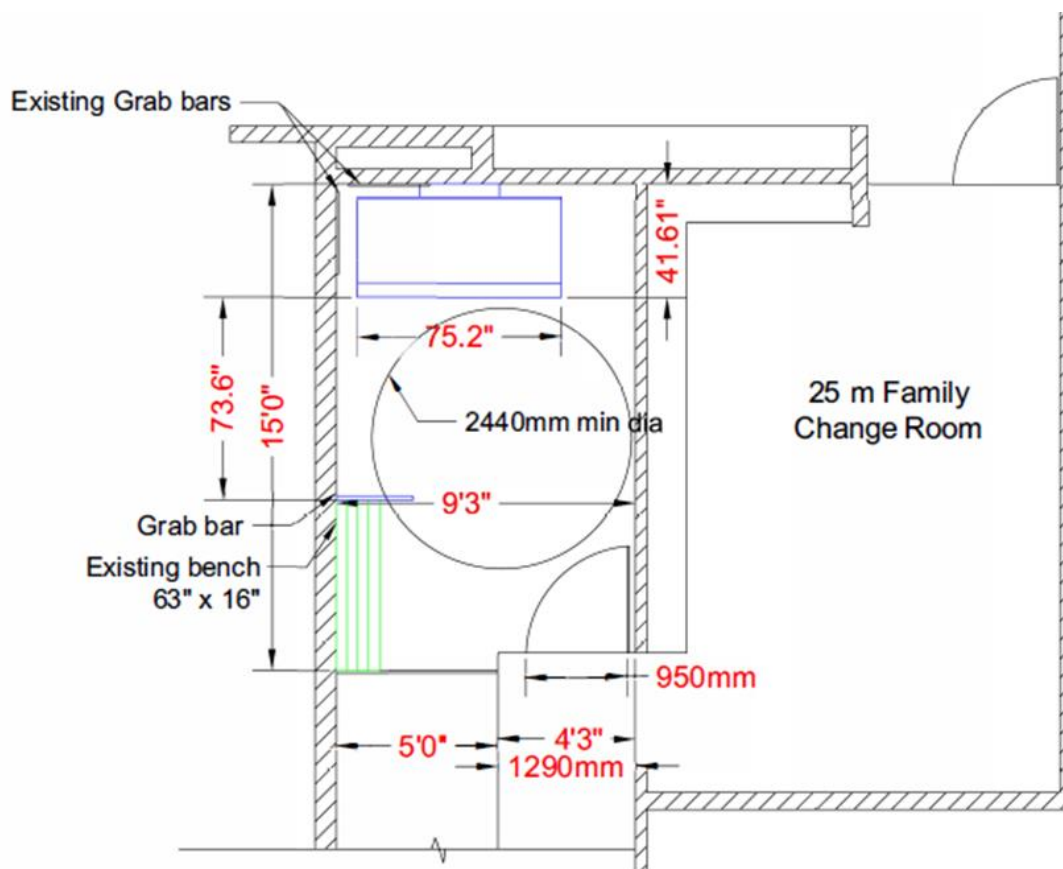


Figure 2 - New Floor Plan of Accessible Change Room



The new accessible change room was created by combining space from the existing change room and the adjacent stall to allow for enough turning radius.

The adult change table installed at the Wayne Gretzky Sports Centre namely, Koala Kare KB3000-AHL Adult Changing Station, is a powered, height-adjustable change table that adjusts from 12" (300mm) to 41" (1,041mm) height from the floor and is tested to support up to 500 lbs. (227 kg) of static load which exceeds the 300 lbs. requirement of both the City's Facility Accessibility Design Standards (FADS) and the Ontario Building Code (OBC). The changing surface of the table measures 75 ¼" (1,911mm) long, and 31 ½" (800mm) wide, and can be opened and closed with one hand. The unit also has a safety rail with a curved dip in the center for easier patient changing by a caregiver. The safety rail rotates and locks under the changing bed when it is in a closed position. The table can also withstand significant exposure to water without damage to electrical components.

Figure 3 below shows the new adult change table installed.

Figure 3 - Photo of New Adult Change Table



The new adult change table and modification to the existing change rooms have been designed with OBC, AODA and FADS design criteria and requirements in mind.

6.0 Financial Implications

There are no financial implications with receiving this report. All costs associated with the installation of an adult change table at WGSC project are included in the approved accessible capital budget for this project.

7.0 Conclusion

The addition of the adult change table at the WGSC will be an asset to the facility and provide convenience when accessing the facilities pools. The City is committed to removing barriers to access programs and services in our facilities and community and works to provide equal opportunities for all under the Accessibility for Ontarians with Disability Act (AODA). The installation of the adult change table at WGSC is one example of how the City continues to promote dignity, independence, integration and equality.



Jennifer Elliott, LET, C.E.T., Dipl.M.M.
Director, Engineering Services

Prepared By:

Gord Gavrilovic, Manager of Facilities Capital Development
Amanda Anderson, Project Management Specialist

Attachments (if applicable)

Copy to:

In adopting this report, is a by-law or agreement required? If so, it should be referenced in the recommendation section.

By-law required yes no

Agreement(s) or other documents to be signed by Mayor and/or City Clerk yes no

Is the necessary by-law or agreement being sent concurrently to Council? yes no