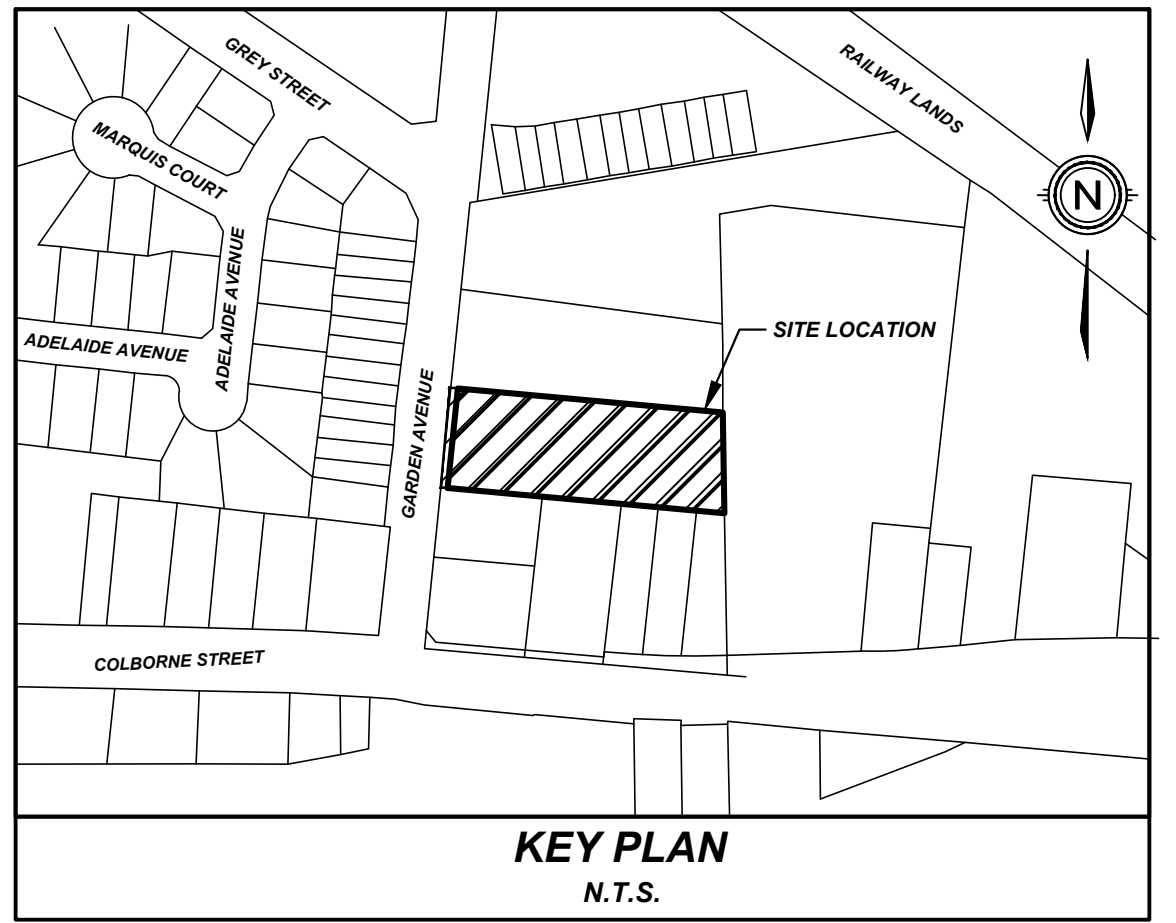
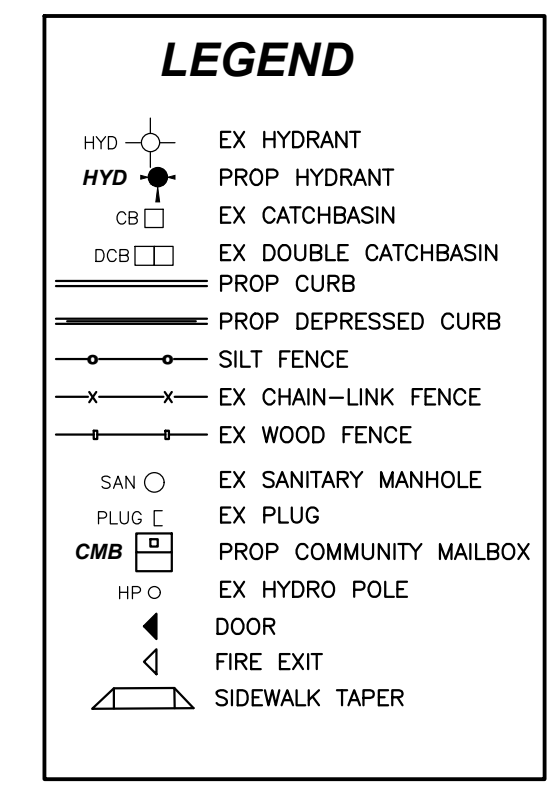


Table with 4 columns: Item, Ontario's 2012 Building Code, OBC Reference, and a grid for fire compartmentation. Includes project info for Fabiani Architect Ltd.

Table with 4 columns: Item, Ontario's 2012 Building Code, OBC Reference, and a grid for fire compartmentation. Includes project info for Fabiani Architect Ltd.

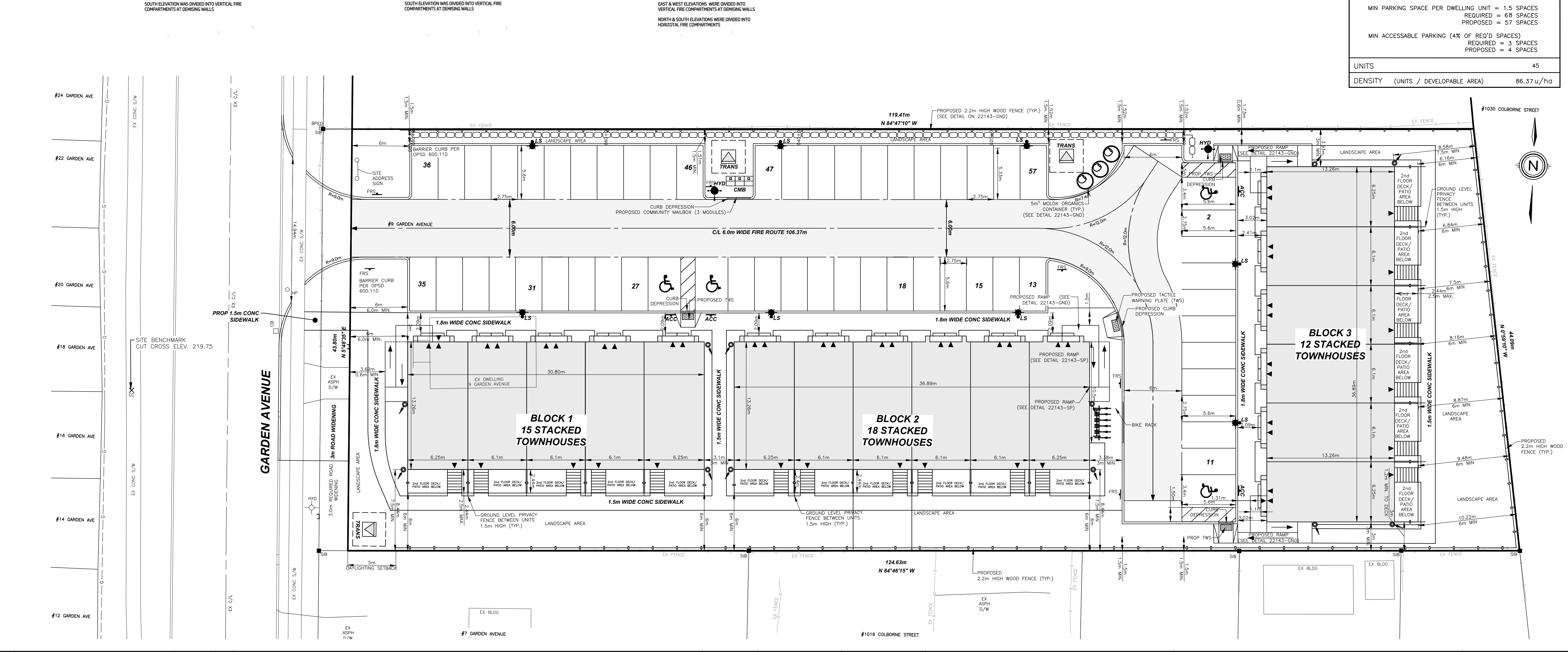
Table with 4 columns: Item, Ontario's 2012 Building Code, OBC Reference, and a grid for fire compartmentation. Includes project info for Fabiani Architect Ltd.

ZONING MATRIX table with columns: APPLICABLE PROVISION, ZONING (R4A-79), and PROVIDED. Lists various zoning requirements like MAX BUILDING HEIGHT, MIN LOT WIDTH, etc.



LEGAL DESCRIPTION: PT OF JOSEPH THOMAS GRANT BRANTFORD CITY AS IN A498582, BRANTFORD CITY

LAND USE SCHEDULE table with columns: TOWNHOUSE LANDS, BUILDING, ROADWAY/DRIVEWAY, etc., and their respective percentages.



Revision table with columns: #, REVISION, DATE, INIT. Lists revisions for accessibility ramps, parking layout, and review.

NOTES: 1. THE POSITION OF POLE LINES, CONDUITS, WATERMANS, SEWER, AND OTHER UNDERGROUND UTILITIES AND STRUCTURES IS NOT NECESSARILY SHOWN ON THE CONTRACT DRAWINGS AND, WHERE SHOWN, THE ACCURACY OF THE POSITION OF SUCH UTILITIES AND STRUCTURES IS NOT GUARANTEED...

DRAFTING: ZC, DESIGN: AK, CHECKED BY: MH, APPROVED BY: AK. NOT FOR CONSTRUCTION ISSUED FOR SITE PLAN APPROVAL ONLY. SITE BENCHMARK: CUT CROSS LOCATED ON SIDEWALK WEST SIDE OF GARDEN AVENUE...

UPPER CANADA CONSULTANTS ENGINEERS / PLANNERS logo. CONSULTANT FILE No. 22143, DATE, PRINTED, SCALE 1:200 m, REF No., DWG No. 22143-SP, REV 3.